

NATIONAL OPEN NEWS

Las Vegas International Chess Festival

Volume 2013 • Issue 4

Editor: Chris Bird

Six-way Tie For First, So Takes Edmondson Cup

The National Open Championship finished in a six-way tie after an exciting final round's play.

Going into the final round, GMs Wesley So, Alejandro Ramirez and Manuel Leon Hoyos were all tied on 4½/5, chased by various GMs on 4.

So and Ramirez were paired against each other on board 1 and they agreed to a quick draw leaving Hoyos the chance to overtake them if he could beat GM Ray Robson, who himself had a chance to tie for first if he could beat his Webster University compatriot.

The game itself was a wild affair in which Hoyos, playing white, had various chances to obtain a big plus but Robson always had some tactical shots.

When Hoyos was unable to find the winning moves, Robson eventually equalized the position and a draw was eventually agreed.

With the draw on board 1 and Hoyos only managing a draw, it allowed the chance for those players on 4 points at the start of the round to join in the tie for first.

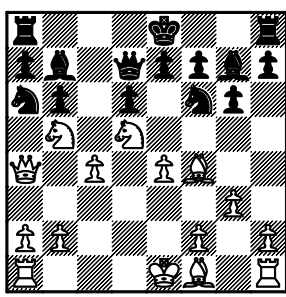
Managing to do that was GMs Jaan Ehlovest, Varuzhan Akobian and Enrico Sevillano, who all won with the black pieces on boards 3, 4 and 5 against GMs Tamaz Gelashvili, Victor Mikhalevski and Fidel Corrales Jimenez respectively.

The Edmondson Cup was won by So by virtue of having the better tie-breaks of the six players who finished in the tie and each player collected \$2,175.

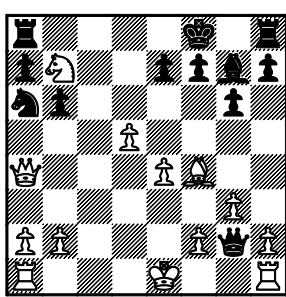
Here is the exciting draw on board 2 and the decisive games on boards 3, 4 and 5, which brought a conclusion to this year's National Open.

□ **Leon Hoyos, Manuel (2651)**
 ■ **Robson, Ray (2698)**
 National Open (6.2)

1.c4 b6 2.Nc3 Bb7 3.e4 c5
 4.g3 g6 5.Nge2 Bg7 6.d4 cxd4
 7.Nxd4 Qc7 8.Bf4 d6 9.Nd5
 Qd7 10.Nb5 Na6 11.Qa4 Nf6
 12.Bh3



12...Qxh3 13.Nxd6+ Kf8
 14.Nxb7 Nxd5 15.exd5 Qg2?
 15...Bxb2 16.Rb1 Bc3+ 17.Ke2
 Nc5 18.Nxc5 bxc5 19.Rb7
 gives White an edge.



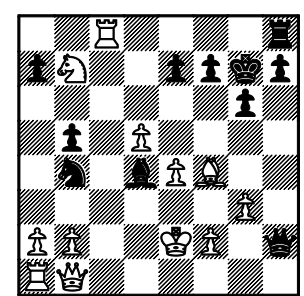
16.Ke2
 16.0-0! Rc8+ 17.Kb1 b5
 (17...Qxf2? 18.Rd2 Nc5
 19.Qd1 and the Black queen is
 trapped.) 18.Qb3 (18.Qxa6?



GM Wesley So winner of the Edmondson Cup

Qxe4+ 19.Ka1 Rc2 20.Qa3 24.exd5 e5!-+ 25.dxe6 Bd4+)
 Bxb2+ 21.Qxb2 Rxb2 22.Kxb2 23.dxe6 fxe6 24.Nd7+ Kg8
 Qb4+=) 18...Qxe4+ 19.Qd3 25.Rh1 Qg4 26.Qd1 Nd5+
 Qxd3+ 20.Rxd3+- and Houdini shows +2 for White due to
 27.exd5 exd5+ 28.Ne5 Qe6= 21.Rxc8+ Kg7

16...b5! 17.Qc2
 17.Qxa6 Qxe4+ 18.Be3 Qc4+
 19.Kd2 (19.Kf3 Qxd5+=)
 19...Qxd5+ 20.Kc2= (20.Kc2?
 Rc8+ 21.Nc5 Qc4+ 22.Kd1
 Rd8+ 23.Ke1 Bxb2-+)
 17...Nb4 18.Qb1 Rc8 19.Rg1
 Qxh2 20.Rc1 Bd4?
 20...Qh5+ 21.Ke3 Re8 22.Nc5
 e5 (22...Rd8 23.a3? Nxd5+



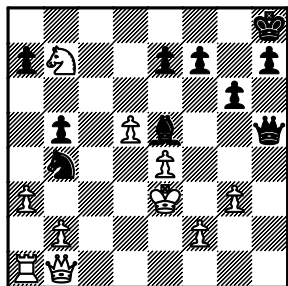
22.Be5+ Bxe5 23.Rxh8 Qh5+

More Final Round Action From The Top



GM Manuel Leon Hoyos came so close to winning the National Open

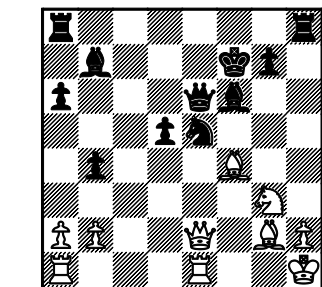
24.Ke3 Kxh8 25.a3
 25.Qd1! White's king is wide open and so he has to be very careful to find the right moves as Black has various tactics to draw the position 25...Qh2 26.Rc1 Bxb2 27.Rb1 Qh6+ 28.Kf3 (28.f4? Qh2!)=) 28...Qh5+ 29.Kg2+-



25...Qg5+!= 26.Kf3 Qf6+ 27.Kg2 Bxb2 28.axb4 Bxa1 29.Qd3 Bd4 30.f4 Qb6 31.Nd8 Bg1 32.Nxf7+ Kg7 33.Qf1!
 33.Ne5?? Qf2+ 34.Kh3 Qh2+ 35.Kg4 Qh5#
 33...Kxf7 34.Qxg1 Qxg1+ 35.Kxg1 a5! 36.bxa5 b4 37.d6 exd6 38.a6 b3 39.a7 b2 40.a8Q b1Q+ 41.Kg2 Qc2+ 42.Kh3 Qd1 43.Qa2+ Kg7 44.Qb2+ Kf7 45.Kh2 1/2-1/2

□ Gelashvili, Tamaz (2668)
 ■ Ehlvest, Jaan (2692)
 National Open (6.3)

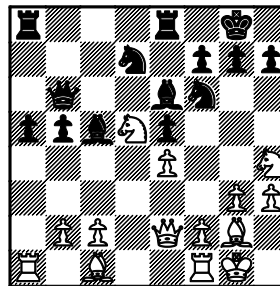
1.e4 c5 2.Nc3 a6 3.g3 b5 4.Bg2 Bb7 5.d3 e6 6.f4 Nf6 7.Nf3 d5 8.e5 Nfd7 9.0-0 Be7 10.Ne2 Nc6 11.c3 b4 12.g4 h5 13.gxh5 Rxh5 14.Ng3 Rh8 15.f5 Qb6 16.fxe6 fxe6 17.Ng5 Nxe5 18.d4 cxd4 19.cxd4 Bf6 20.Kh1 Nf7 21.Nxe6 Qxe6 22.Re1 Nfe5 23.dxe5 Nxe5 24.Bf4 Kf7 25.Qe2?
 25.Rc1! Rxh2+ 26.Kxh2 Ng4+ 27.Kh1 Rh8+ 28.Nh5! (28.Kg1? Qb6+ 29.Be3 Nxe3-+) 28...Rxh5+ 29.Kg1 Qb6+ 30.Be3 Nxe3 31.Qxh5+ and White should stand better although the position is still very complicated.



25...Rxh2+! 26.Kxh2
 26.Kg1 Rxg2+! 27.Qxg2 Qb6+ 28.Kf1 Nd3+-
 26...Ng4+ 27.Kg1 Bd4+ 0-1

□ Mikhalevski, Victor (2628)
 ■ Akobian, Varuzhan (2685)
 National Open (6.4)

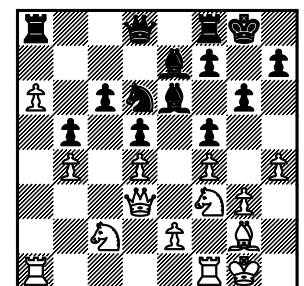
1.Nf3 d5 2.g3 c6 3.Bg2 Bg4 4.0-0 Nd7 5.d3 Ngf6 6.Qe1 e5 7.e4 dxe4 8.dxe4 Qc7 9.Nbd2 Bc5 10.Nh4 0-0 11.Nc4 Rfe8 12.a4 a5 13.h3 Be6 14.Qe2 b5 15.Ne3 Qb6 16.axb5 cxb5 17.Nd5?!



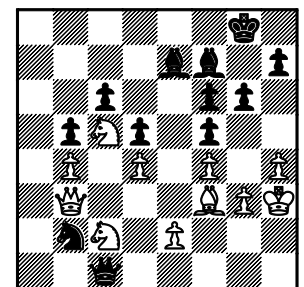
17...Bxd5!
 The White pawn on d5 will be more of a liability than a strength.
 18.exd5 g6 19.Be3 Bxe3 20.Qxe3 Qxe3 21.fxe3 e4 Black starts the process of rounding up the d5 pawn.
 22.Rfd1 b4 23.g4 Re5 24.Rd4 Nb6 25.d6 Rc8 26.Rf1 Kg7 27.Rf2 h5! 28.Rxf6
 Desperation although White's position is losing.
 28...Kxf6 29.Bxe4 hxg4 30.hxg4 Rd8 31.Nf3 Re6 0-1

□ Corrales Jimenez, Fidel (2661)
 ■ Sevillano, Enrico (2549)
 National Open (6.5)

1.d4 Nf6 2.Bg5 d5 3.Bxf6 exf6 4.g3 c6 5.Bg2 Qb6 6.b3 a5 7.Nf3 a4 8.0-0 axb3 9.cxb3 Bb4 10.a4 0-0 11.Na3 Na6 12.Qd3 g6 13.Nh4 Be6 14.Nc2 Be7 15.f4 f5 16.Nf3 Nc7 17.h4 Ne8 18.b4 Nd6 19.a5 Qd8 20.a6?! b5



Is White's a-pawn a strong outside passed pawn or is it a weakness? The next few moves will show the answer.
 21.Ra2 Qb6 22.Rfa1 Ra7 23.Ne5 f6 24.Nf3 Rfa8
 The pawn cannot be defended enough times and falls.
 25.Nd2 Rxa6 26.Rxa6 Rxa6 27.Rxa6 Qxa6 28.Nb3 Bf7 29.Nc5 Qa2 30.Kh2 Qb1 31.Bf3 Nc4 32.Kh3 Qf1+ 33.Kh2 Qc1 34.Kh3 Nb2 35.Qb3?!
 White should have gone in for trading queens and tried to hold the ending. Of course, Black is a pawn up and will be expected to convert but at least this way White can make him work for it. 35.Qe3 Qxe3 36.Nxe3 Nc4 37.Nc2



GM Enrico Sevillano joined the six-way tie for first after beating GM Fidel Corrales Jimenez in the last round

GM Ron Henley's Tactics

35...g5!

Opening up the position for the bishops.

36.hxg5 fxc5 37.fxc5 Bxc5

38.Nd3 Qf1+ 39.Kh2 Nxd3

40.Qxd3 Qf2+ 41.Kh1 Qxg3

42.Qxf5 Bg6?!

42...Bf4 43.Qg4+ Bg6 44.Qxg3 Bxg3+ and the pawns on b4 and d4 will soon fall to the Black dark-squared bishop.

43.Qc8+

43.Qe6+ Kh8 44.Ne3 and White can maybe fight on.

43...Kg7 0-1

Here are some tactics provided by GM Ron Henley during his game analysis session.

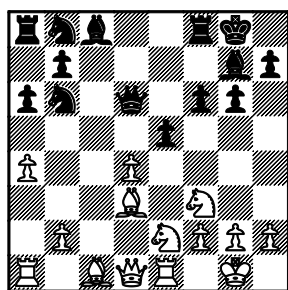
□ Justin, Friedlander (1367)

■ Marcus, Francis (1088)

National Open (U1400) (3)

Black has just protected his e5 pawn with f7-f6. However he severely weakened the b3-g8 diagonal which White immediately exploits.

14...f6



15.dxe5!

This capture now leaves the black queen on d6 in "x-ray" opposition to the white queen on d1.

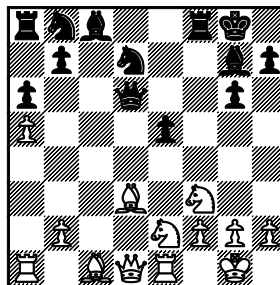
15...fxe5 16.a5!

White dislodges the black knight from protecting the c4 square. Note 16.Bc4+?? is

premature since 16...Nxc4 protects the black queen on d6.

16...N6d7

Black has no way to avoid material loss. a) 16...Nd5 17.Bc4 A powerful "double pin" along the d-file and along the c4-g8 diagonal. 17...Be6 18.Nc3! Rd8 19.Ng5 and Black cannot save his pinned units 19...Nc7 (19...Nxc3 20.Bxe6+) 20.Nxc6 Nxe6 21.Bxc6+ Qxc6 22.Qxd8+ etc.; b) 16...Rd8 Counter-attacking the white bishop on d3. 17.Bg5! Bf6 18.Bxf6 Qxf6 19.axb6 e4 Hoping to recoup the pinned white bishop on d3 20.Qb3+! Be6 21.Bc4 and White retains his extra piece.



17.Bc4+ Kh8 18.Qxd6 1-0

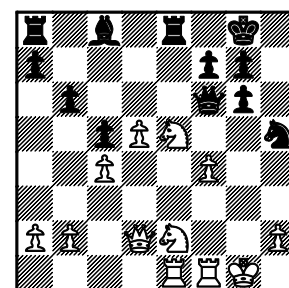
Black was mated on move 25.

□ Bjorksten, Lennart (2167)

■ Biyiasas, Theodore (2112)

National Open (U2200) (3)

A balanced position has occurred where White has a connected passed d-pawn and a knight posted on e5. On the downside, the white kingside is weakened and Black has an excellent long range light square bishop.



21...g5??

Black attempts to undermine the white knight e5 outpost. The correct approach was to connect the black rooks and exploit the loose white kingside with 21...Bh3! 22.Rf2 Qh4 would offer Black a slight advantage unless White finds the counter-intuitive pawn sacri-

Blitz Results

GM Wesley So managed to win the Blitz Open Section thereby completing a trio of victories over the weekend after his triumphs in the US Game/10 and National Open.

Here are the top results from both sections.

Open Section

Player	Pts
GM Wesley So	12
GM Alex Lenderman	11
GM Jaan Ehlevest	10
GM Conrad Holt	10
GM Mikheil Kekelidze	10
FM Nick Raptis	10
GM Ray Robson	9
GM Varuzhan Akobian	9
GM Tamaz Gelashvili	9
IM Daniel Naroditsky	9
IM Roberto Martin-del-Campo	9
Jonathan Chiang	9

Under 1900 Section

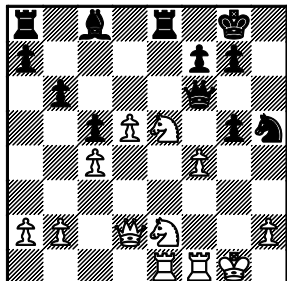
Player	Pts
Rick Sun	11
Cesar Mendoza	10½
Chad Badgett	10
Royce Pereira	9½
Andrew Trattner	9½
Eric Hon	9
Hans Niemann	9



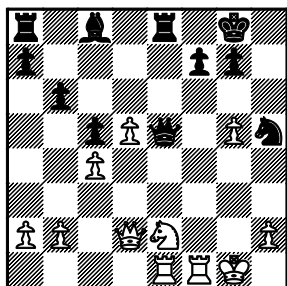
GM Ron Henley teaching at the chess camp on Thursday

GM Ron Henley's Tactics Continued

...f3 23.Ng3 Nxf3 24.hxg3 Qxg3+ 25.Kh1 which Crafty evaluates as completely equal.

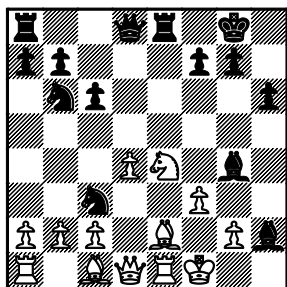


22.fxg5!
White alertly seizes the moment to exploit the disconnected black rooks.
22...Qxe5
Other queen moves such as 22...Qd6 allow 23.Nxf7 with a winning position for White.

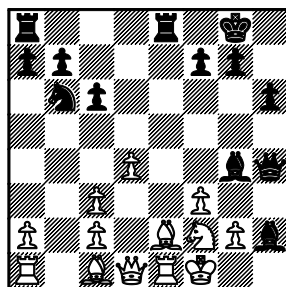


23.Ng3!
White uses the discovered attack to zap the black queen to her unprotected rook on e8.
23...Qxe1 24.Rxe1 Bg4 25.Ne4 1-0

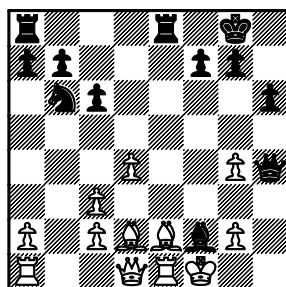
□ Imada ,Todd (1917)
■ Handigol ,Abhishek (1998)
National Open (U2000) (3)



16.bxc3
Black played the dubious "Elephant Gambit" but managed to whip up complications leading to a kingside attack.
16...Qh4!
The black queen heads into the kingside with powerful effect.
17.Nf2?!
White plays to capture the black bishop on g4.



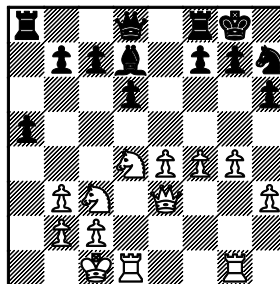
17...Bg3!
Black continues to ignore the attack on his g4 bishop.
18.fxg4
If 18.Nxf4 Qh1#
18...Bxf2 19.Bd2
White tries to "buy Black off" by offering the exchange on e1.



19...Bg3! 0-1
White has no defense to the black queen + bishop mating combination.

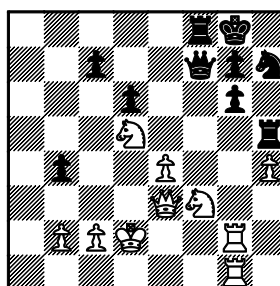
□ Ruddell,Solomon (2051)
■ Gutierrez,Paloma (2212)
National Open (3)

In a "quiet Italian Game" when Black ignored the center, White built up a powerful center and kingside attack.



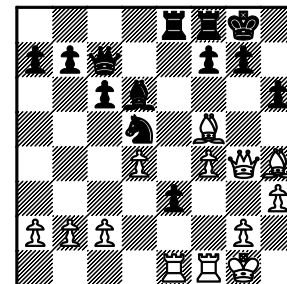
18.g5!
White correctly plays to blast open the g-file.
18...hxg5 19.fxg5 a4?
Black strives for counterplay against the white king. Note 19...g6 20.h4 continues the white attack.
20.bxa4 Bxa4 21.g6! fxg6 22.Nxa4! Qe8

Black now realizes that 22...Rxa4 23.Qb3+ nets White a rook.
23.Nc3
"Eat and run" as the white knight pockets the bishop and returns home. The conclusion to this 200 point upset was...
23...Ra1+ 24.Kd2 Ra5 25.Rg2 Re5 26.Nf3 Rh5 27.h4 b5 28.Rdg1 b4 29.Nd5 Qf7

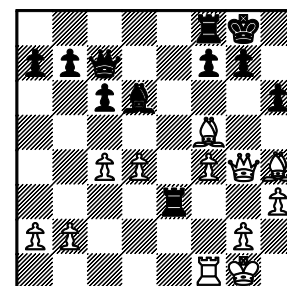


30.Rxg6! 1-0
Black resigned in view of 30.Rxg6 Qxf3 is met by 31.Rxg7+ Kh8 32.Qxf3 Rxf3 33.Rg8#

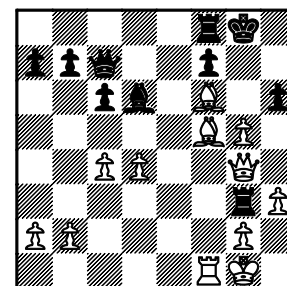
□ Brackelsberg,Josh (1805)
■ Gretchanei,Petro (1860)
National Open (U2000) (3)



20.c4!?
White has the bishop pair, but Black has a passed e-pawn.
20...e2? 21.Rxe2 Ne3?!
Black plays to win the exchange but should resign himself to 21...Nxf4 22.Ref2 Ng6 23.Bxg6 fxg6 24.Qxg6 with a solid extra pawn for White.
22.Rxe3 Rxe3



23.Bf6
Black has trouble defending his critical g7 point.
23...g5
Black tries an imaginative defense. Of course 23...g6 is met by 24.Bxg6! fxg6 25.Qxg6+ Qg7 26.Qxg7#
24.fxg5! Rg3



25.gxh6+!! 1-0
After 25.gxh6+ Rxf4 26.h7# A beautiful bishop + pawn mate.

INTERNATIONAL

International Youth Festival Champs!



CHESS FESTIVAL

www.VegasChessFestival.com
(702) 560-0955

